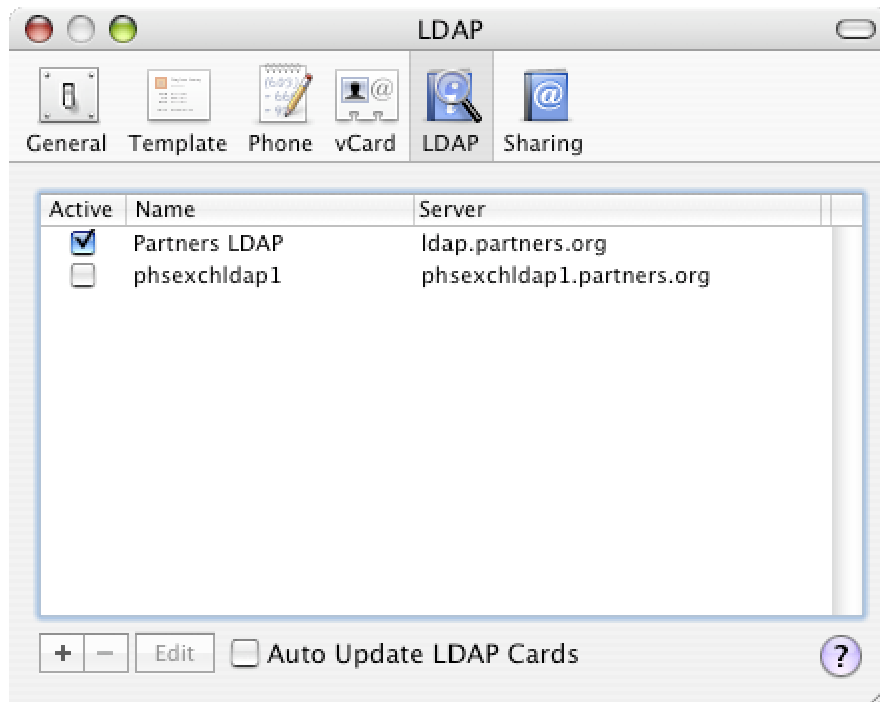


Configure Mac Mail to use Partners Addressbook (GAL)

1. Open **Applications** folder on your hard drive and open **Address Book**.
2. On **Address Book** menu and select **Preferences...**
3. Select **LDAP** and click + to add an entry (or Edit to modify an existing one)



5. Configure as below using **your own partners\username**.
6. Click **Save** to exit.

The screenshot shows the LDAP configuration dialog box. It contains the following fields and options:

- Name: Partners LDAP (For example: My LDAP Server)
- Server: ldap.partners.org (For example: ldap.mycompany.com)
- Search Base: cn=users,dc=partners,dc=org (For example: ou=people,o=company)
- Port: 3268 Use SSL
- Scope: Subtree
- Authentication (optional) section:
 - User name: partners\nbc0
 - Password: *****
 - Auth Type: Simple

Buttons for 'Cancel' and 'Save' are at the bottom.