

NETWORK ENGINEERING EAST FIELD NOTICE

June 20, 2002

SUBJECT: Windows XP systems default settings can interfere with the proper operation of the PC on the Partners Network.

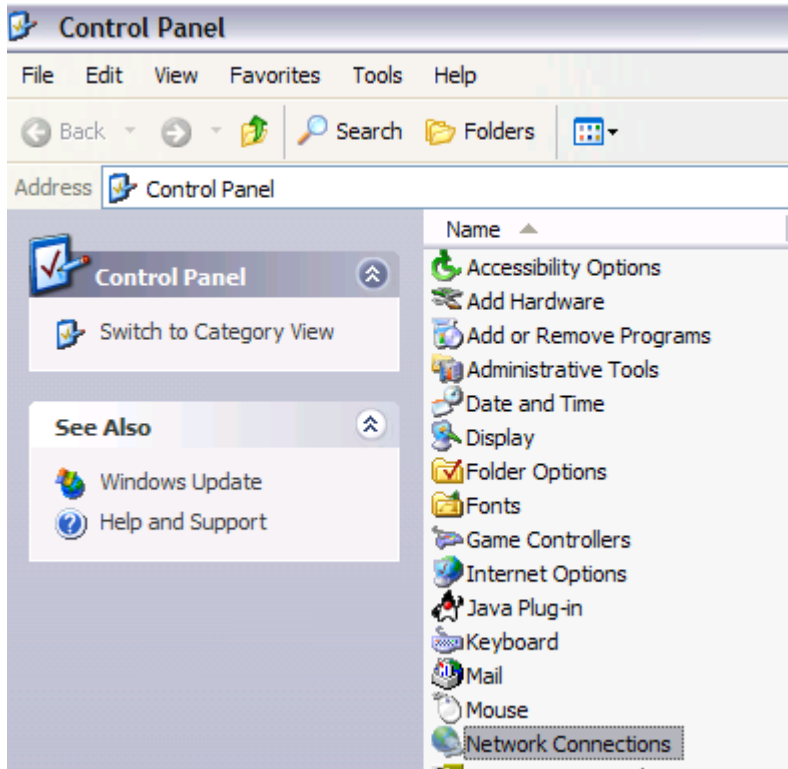
ISSUE: The default network settings of bridging and 802.1x need to be changed.

SOLUTION: Please follow the following steps to correct this issue.

1) Select **START** **CONTROL PANEL**



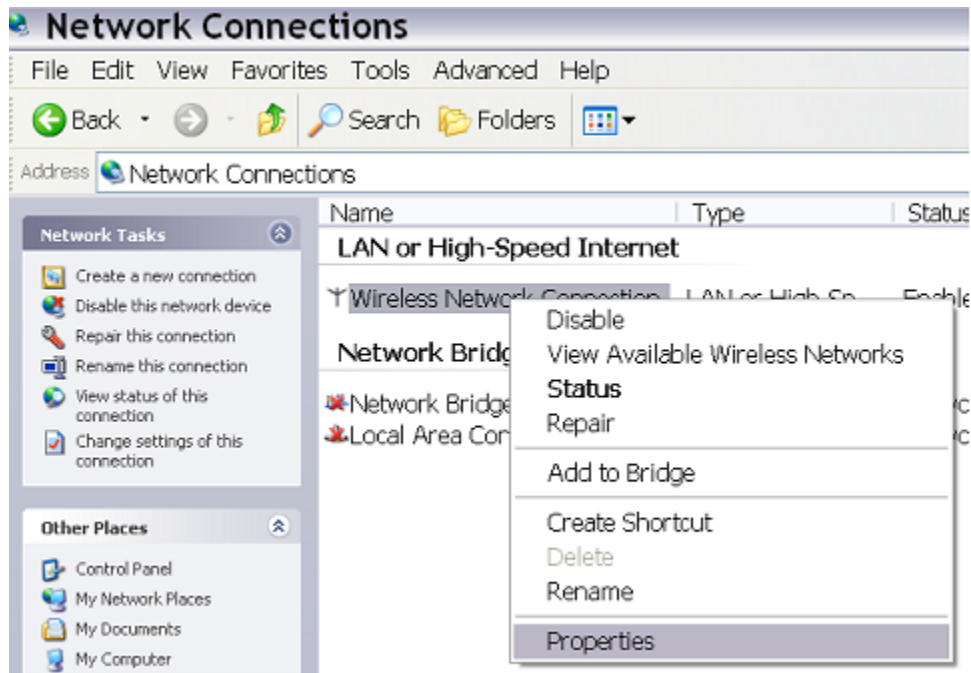
2) In the control panel select **NETWORK CONNECTIONS**



3) Right click the **Network Bridge** Icon and select **disable**.



4) Right click your LAN connection and select Properties.



5) Select the Authentication tab and uncheck the Enable network access control using IEEE 802.1x





6) Repeat steps 4 and 5 for all network connections

6) Close all windows and reboot if necessary

Note: all future Network Engineering Field change notices will save at: Z:\NETENG\PHSDocs Please check often for new notices.